

# IntegraVision

*Variable data verification and Barcode Grading for Label and Narrow Web inspection applications.*

IntegraVision's latest toolset combines high performance imaging and variable data integrity verification, with barcode grading capabilities for on line, narrow web, label and ticket inspection applications. Featuring high resolution camera technology, IntegraVision acquires large format images of key fields and target areas on a label or narrow web and identifies user defined errors providing complete 100% quality and integrity assurance.

*Essential for all narrow web and label printing processes where the integrity of variable data, and the quality of every barcode is crucial.*



- Barcode grading to International Standard ISO/IEC 15416:2000
- Simultaneous print quality and data integrity verification
- Real time identification of print errors
- Piece level tracking
- Integrity and productivity reporting
- Network multiple processes for integrity management in a shared job environment
- ePedigree verification

- Narrow Web / Label Presses
- Rewinders
- Litho and Offset Presses
- Hi-Speed Inkjet Printers
- Digital Printers

*IntegraVisions combined toolset provides the most flexible and powerful print inspection system on the market today.*

Designed for integration into new equipment, or as a retrofit installation on to existing equipment, IntegraVisions Label toolset provides product and process quality enhancements, improved productivity and reduced waste and labour costs.



# IntegraVision

## Input Devices

**Area Scan Cameras** High resolution GigE

**Line Scan Cameras** Up to 8K line scan

**Triggering** Leading edge sensor  
Encoder (5000ppr)

## Processor

**Operating System** Windows™ XP

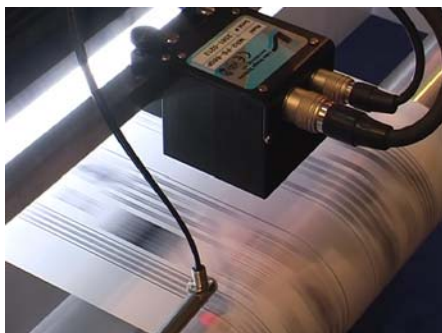
**Process Time** Linear speed in excess of 150m/min

**Chassis** Standard PC or Industrial Rack  
(IP54 rated)  
Power 110-230VAC

**Approvals** CE/UL Certified

## Functionality:

- Inspection:**
- Number / Character legibility
  - Bar-code grading
  - Streak / void detection
  - Front / back (duplex) matching
  - Missing / duplicate piece detection
  - Print alignment verification
  - ePedigree verification and tracking
  - Integrity reporting
  - Image archiving



## Supported Code formats

**OCR** Fully font trainable by system operator  
Skew:  $\pm 15$  Deg

**Barcode**

- EAN 13
- EAN 8
- UPC A
- UPC E
- Code 128
- Code 39
- Code 93
- 2/5 interleaved
- 2/5 discrete
- Pharmacode

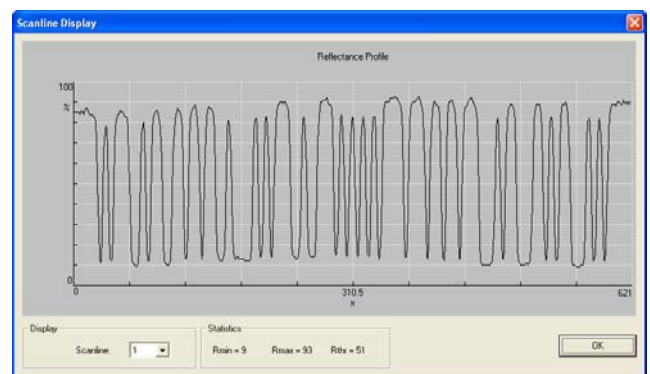
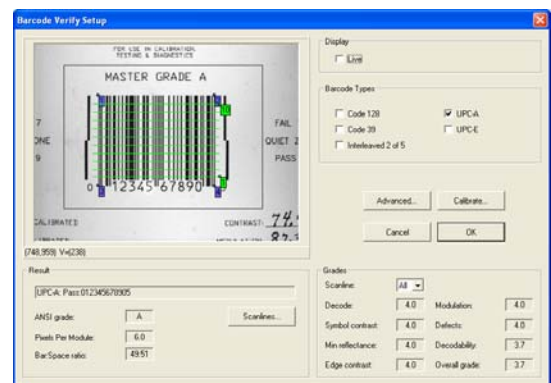
**2D** • Datamatrix • PDF417 • QR Code

## Barcode Grading

**Standards** Online grading to International Standard  
ISO/IEC 15416:2000

**Barcode**

- UPC A
- UPC E
- Code 128
- Code 39
- 2/5 interleaved
- 2/5 discrete



Lake Image Systems Ltd

[www.lakeimage.com](http://www.lakeimage.com)

## Europe and Rest of World

The Forum Icknield Way Tring Hertfordshire HP23 4JX UK  
T: +44 (0) 1442 892700 F: +44 (0) 1442 892792 E: sales@lakeimage.com

## Lake Image Systems France

165 Avenue du Prado 13272 MARSEILLE CEDEX 08 FRANCE  
T: +33 (0) 491 17 90 62 F: +33 (0) 491 17 90 63 E: euLIS@lakeimage.com

## The Americas

## Lake Image Systems, Inc.

205 Summit Point Drive Suite 2 Henrietta N.Y. 14467 USA  
T: +1 585 321 3630 F: +1 585 321 3788 E: salesna@lakeimage.com

## Asia

## Lake Image Systems Asia

Block 4008 Ang Mo Kio Ave 10, #02-19 Techplace 1 Singapore 569625  
T: +65 9722 3490 F: +44 1442 892 700 E: LISAsia@lakeimage.com